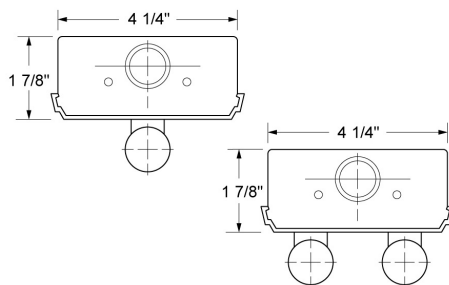
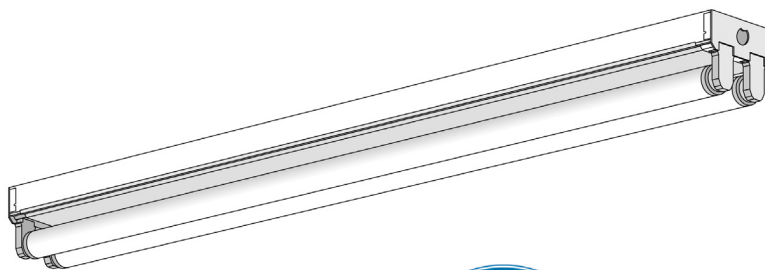




## Strip Series



End Views: SEP Series 1- and 2-Light Models



Motion sensor available option



### Features

An all-purpose 1- or 2-light economy strip for a wide range of bi-pin and slimline fluorescent lighting applications. All fixture parts snap together for ease of installation and maintenance. Side knockouts are provided for a convenience outlet, a pull switch and conduit. Chain hanger slots are provided on the sides and back.

### T8 Series (Single Lamp)

Model #  
 NHL-SL-1-17T8-UNV (24")  
 NHL-SL-1-25T8-UNV (36")  
 NHL-SL-1-32T8-UNV (48")  
 NHL-SL-1T-32T8-UNV (96")

### T8 Series (Two Lamp)

Model #  
 NHL-SL-2-17T8-UNV (24")  
 NHL-SL-2-25T8-UNV (36")  
 NHL-SL-2-32T8-UNV (48")  
 NHL-SL-2T-32T8-UNV (96")

### T5 Series (Single Lamp)

Model #  
 NHL-SL-1-14T5-UNV  
 NHL-SL-1-21T5-UNV  
 NHL-SL-1-28T5-UNV

### T5 Series (Two Lamp)

Model #  
 NHL-SL-2-14T5-UNV  
 NHL-SL-2-21T5-UNV  
 NHL-SL-2-28T5-UNV

### T5HO (Single Lamp)

Model #  
 NHL-SL-1-24T5HO-UNV  
 NHL-SL-1-39T5HO-UNV  
 NHL-SL-1-54T5HO-UNV

### T5HO (Two Lamp)

Model #  
 NHL-SL-2-24T5HO-UNV  
 NHL-SL-2-39T5HO-UNV  
 NHL-SL-2-54T5HO-UNV

### Specifications

- Housing: Die-formed heavy-gauge cold rolled steel (20 gauge upon request).
- Cover: Snap-on type, fabricated in two sections for 72" and 96" bodies to simplify installation.
- Ends and Socket Plates: Snap-in type. Ends also function as couplers for continuous row installations.
- Finish: White polyester polymer with a minimum of 82% reflectivity.
- Mounting: Designed for surface, stem or chain hanging. Can be installed as individual units or in continuous rows.

### Accessories

- DIM-Dimming Ballast
- REF-Reflector System  
(consult with factory for options)
- EM-Emergency Ballast
- Wire guard option available

strip911

**New Horizon Lighting, 632 Cedar Swamp Road, Jackson NJ**  
**www.newhorizonlighting.com Voice: 732-833-8086 Fax: 732-833-8085**