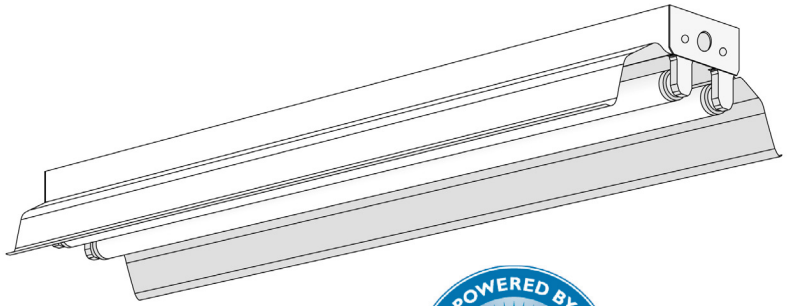
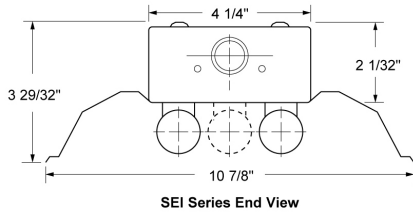




Industrial Series



Motion sensor available option



Specifications

- **Housing:** Die-formed heavy-gauge cold rolled steel (20 gauge upon request) with side knockouts for a convenience outlet, a pull switch and conduit. Sides and back have knockouts for chain hanger.
- **Reflector:** One end of reflector slides into socket plate and the other end is held on by a cam-lock (included). Fabricated in two sections for 72" and 96" bodies to simplify installation. Aligners available for tandem configurations and continuous runs.
- **Ends and Socket Plates:** Snap-in type. Ends also function as couplers for continuous runs.
- **Finish:** White polyester polymer with a minimum of 82% reflectivity or optional miro 4 92% or white optic 96%.
- **Mounting:** Designed for surface, stem or chain hanging. Can be installed as individual units or in continuous rows.

Accessories

- SEN-Motion Sensor
- SR (Miro 4 Reflector)
- EM-Emergency Ballast
- ACH-Aircraft Cable Hangers
- SM-Stem Mount

sei_t5-911

T8 Series

- Model #
- NHL-IND-1-17T8-UNV (24")
 - NHL-IND-2-17T8-UNV (24")
 - NHL-IND-1-25T8-UNV (36")
 - NHL-IND-2-25T8-UNV (36")
 - NHL-IND-1-32T8-UNV (48")
 - NHL-IND-2-32T8-UNV (48")
 - NHL-IND-1T-32T8-UNV (96")
 - NHL-IND-2T-32T8-UNV (96")
 - NHL-IND-4T-32T8-UNV (96")

T5HO Series

- Model #
- NHL-IND-1-24T5HO-UNV (24")
 - NHL-IND-2-24T5HO-UNV (24")
 - NHL-IND-1-39T5HO-UNV (36")
 - NHL-IND-2-39T5HO-UNV (36")
 - NHL-IND-1-54T5HO-UNV (48")
 - NHL-IND-2-54T5HO-UNV (48")
 - NHL-IND-1T-54T5HO-UNV (96")
 - NHL-IND-2T-54T5HO-UNV (96")
 - NHL-IND-4T-54T5HO-UNV (96")

Features

A high quality all-purpose economy Industrial with symmetrical reflector. All parts snap together for ease of installation and maintenance. Side knockouts are included for a convenience outlet, a pull switch and conduit. Sides and back have knockouts for chain hangers.

New Horizon Lighting, 632 Cedar Swamp Road, Jackson NJ
www.newhorizonlighting.com Voice: 732-833-8086 Fax: 732-833-8085